



# Stealth Squadron

## August Contest 2026

### Amesbury, Ma.

**Date:** August 22nd, 2026  
9:00am – 5:00pm

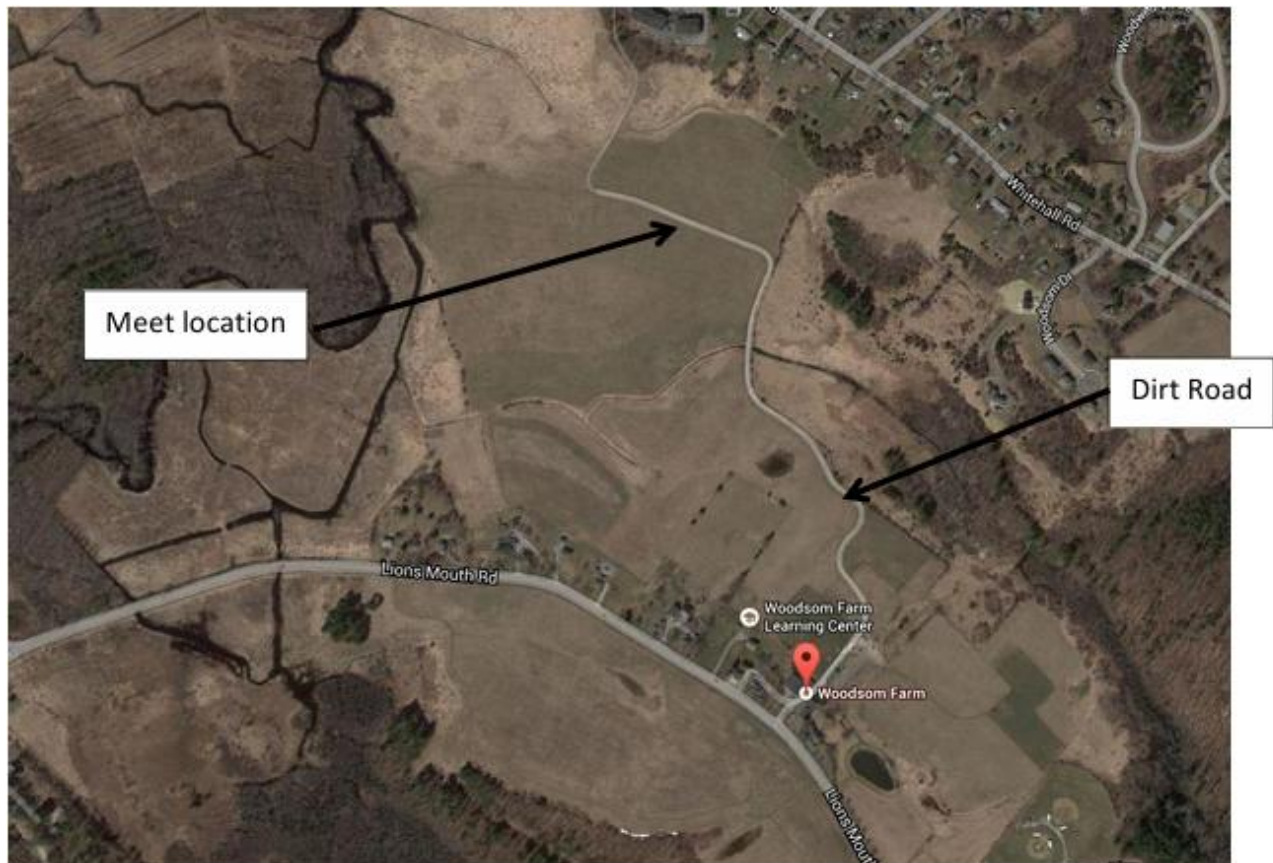
**Events:**

- **FAC Scale**
- **FAC Peanut**
- **Embryo**
- **Low Wing Military Trainer**
- **Dime Scale**
- **Jet Catapult**
- **Golden Age Monoplane**
- **Tow Line Scale Glider**
- **Thompson ML, \*(10% motors)**
- **Greve ML, \*(10% motors)**
- **WW1 ML (Multi-wing only, unlimited rubber motors)**
- **WW2 ML \*(10% motors)**

**\*10% motor meaning weight of rubber motor not to exceed 10% of weight of model,  
(without motor)**

**Location:** Woodsom Farm, 222 Lion's Mouth Rd, Amesbury, Ma.

Directions to Woodsom Farm, (222 Lion's Mouth Rd, Amesbury, Ma.); Woodsom Farm is located approximately 35 miles north of Boston in the town of Amesbury. It is best reached by accessing Route 495 and taking exit 118, onto Route 150 headed north. About a ½ mile up Rt. 150 is a traffic light and Highland Street on the left. Take that street to its end and continue left onto Lion's Mouth Road, ("Friends St."). You will see a "Woodsom Farm" sign on your left, however the entrance to the main field is about another 50 yards further and on your **right**. Continue straight on the driveway, (soccer fields on right and left), and onto the dirt road. The model club will be set up about 200 yards up the dirt road.



**Website:** [stealthsquadron-fac49.com](http://stealthsquadron-fac49.com)

**Contact:** Steve Evans [twigsandtissue@gmail.com](mailto:twigsandtissue@gmail.com)